

N-IP08-LPR

Main Features

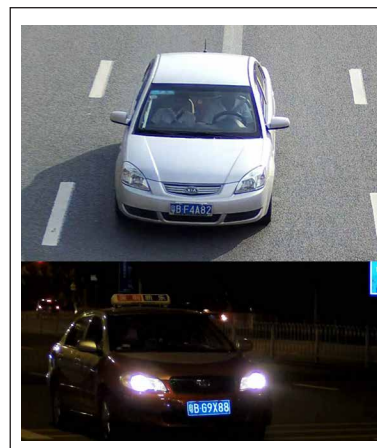
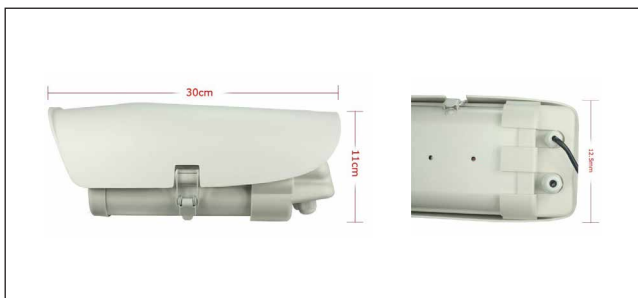
- 1/2.7" 2M CMOS sensor
- Ambarella A5 processor
- 2.8-12mm Megapixel Lens
- Strong compatibility, high performance
- 0-150km/h vehicle speed adjustable.

Specification



	Model	N-IP08-LPR	
Video	Image sensor	1/2.7" 2M CMOS sensor	
	Processor	Ambarella A5 processor	
	Resolution	1920*1080	
	Video output	Network and CVBS	
	Compression	H.264 high profile, M-JPEG	
	FPS		1920x1080/1-30fps
			1280*960/1-30fps
			1280*720/1-30fps
		Compressed code	256K-12Mbps
		Dual streaming	Support
	3D DNR	Support	
Function	Network interface	RJ45 ethernet port, 10/100M TCP/IP/UDP/RTSP/FTP/PPPOE/DHCP/DDNS/NTP/UPnP supported	
	LPR model	Vehicle speed, environment brightness adjustable	
Common	Day/night	Auto switching (IR model)	
	LED	White light LED array	
	Lens	2.8-12mm Megapixel Lens	
	Power supply	DC12V(±10%) /POE(IEEE802.3at)	
	Power dissipation	14W (LED and heater works)	
	Work temperature, humidity	-10°C ~55°C, 10%~90% RH	
	Temperature control	-5°C heater(optional), 45°C fan works	
	Waterproof	IP66	
	Dimension	300x125x110mm	
	Weight	1300g	

Dimension



Accessories

- CD
- Guarantee card
- Screw
- Desiccant